



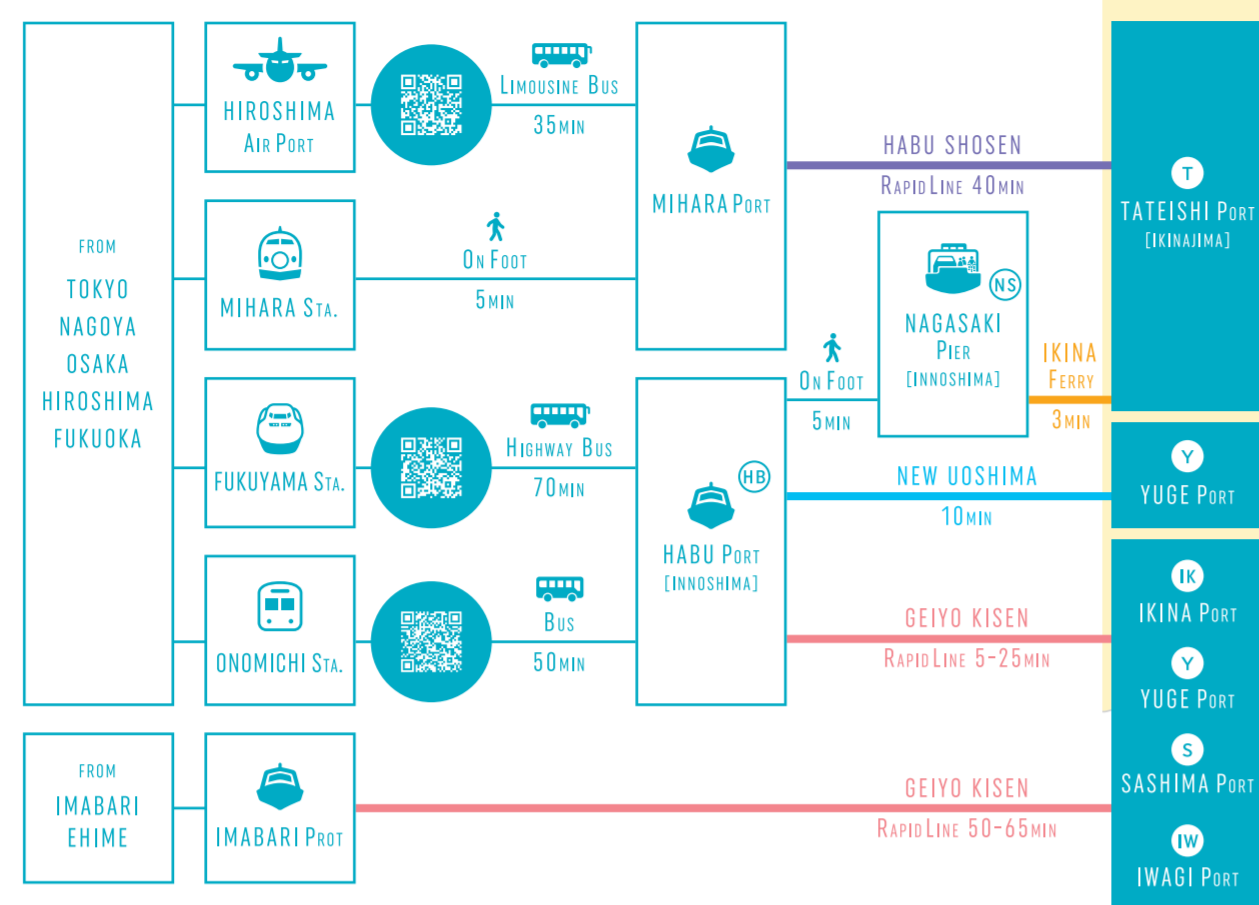
About KAMIJIMA TOWN

Kamijima town sits on a beautiful archipelago of 25 islands nestled in the Seto Inland Sea. Untethered by bridges to the mainland, Kamijima is a peaceful island haven, with the 4 main islands - Yugejima, Sashima, Ikinajima, and Iwagijima- connected by three graceful cable-stayed bridges. Beyond the bridges lies Uoshima, Takaikamishima and many more islands, waiting to be explored.

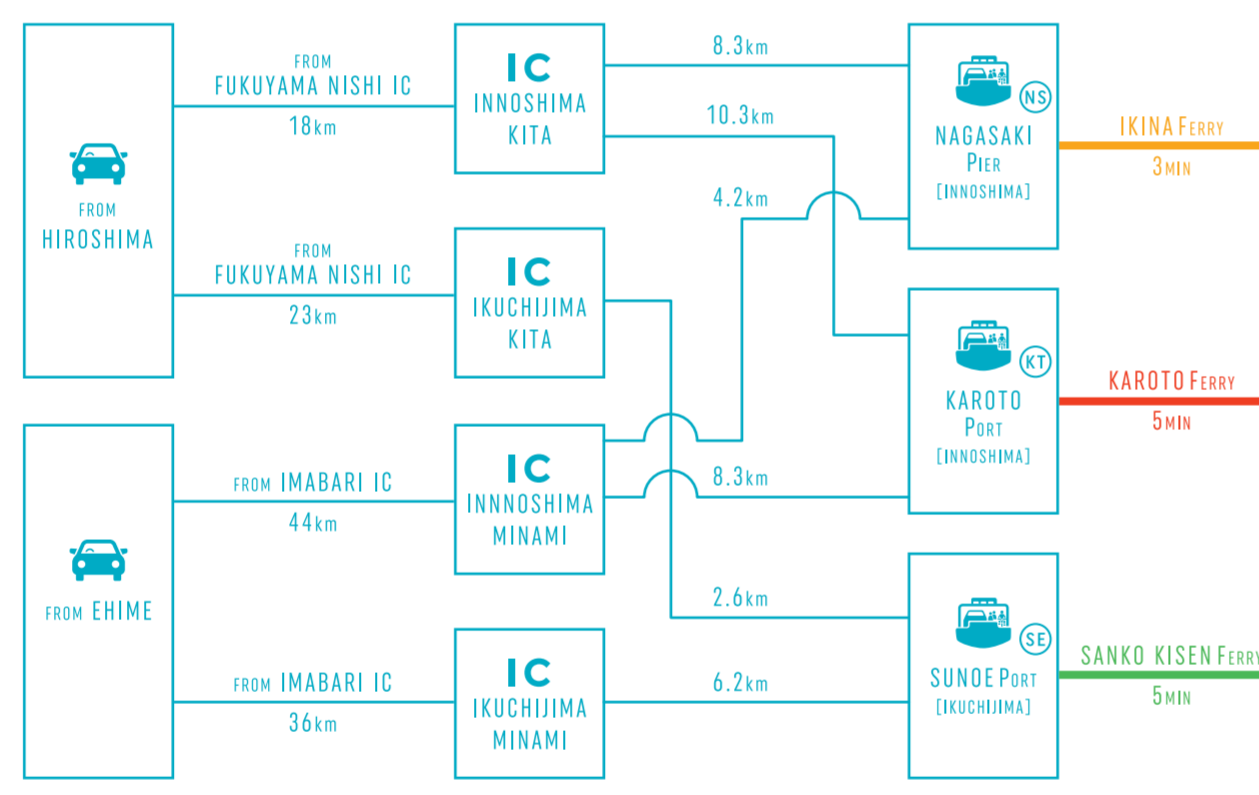
These islands resonate with history. In ancient times, it was a "salt manor," vital to prosperity. Today, they retain echoes of this rich past. Discover local festivals, embrace time-honored traditions, and let the islands' tranquility wash over you as you explore their scenic beauty. Kamijima isn't just a destination; it's an enchanting experience.



ACCESS by PUBLIC TRANSPORT



ACCESS by Private CAR, via SHIMANAMI KAIDO



ACCESS MAP

- SE SUNOOE PORT
- HB HABU PORT
- NS NAGASAKI PIER
- KT KAROTO PORT
- OKOGI PORT
- IW IWAGI PORT
- TY TOYOSHIMA PORT
- TK TAKAIKAMI PORT
- Y YUGE PORT
- IK IKINA PORT
- S SASHIMA PORT
- KY KAMIYUGE PORT
- U UOSHIMA PORT

YUMESHIMA KAIDO

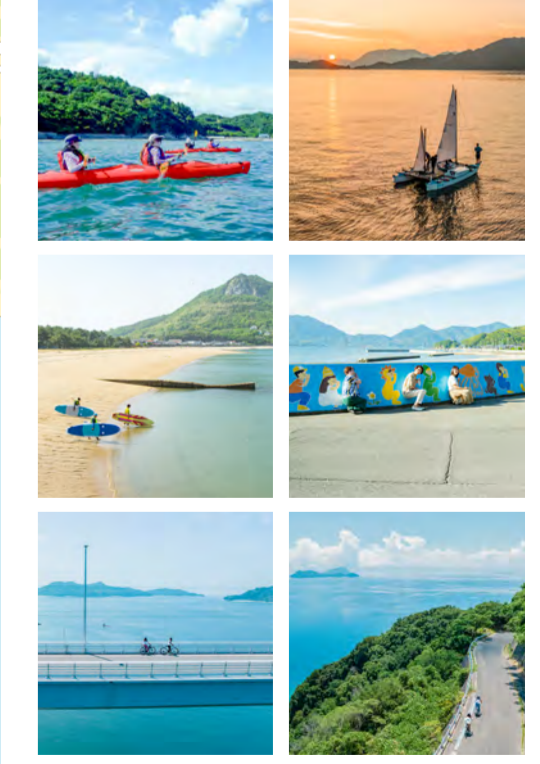
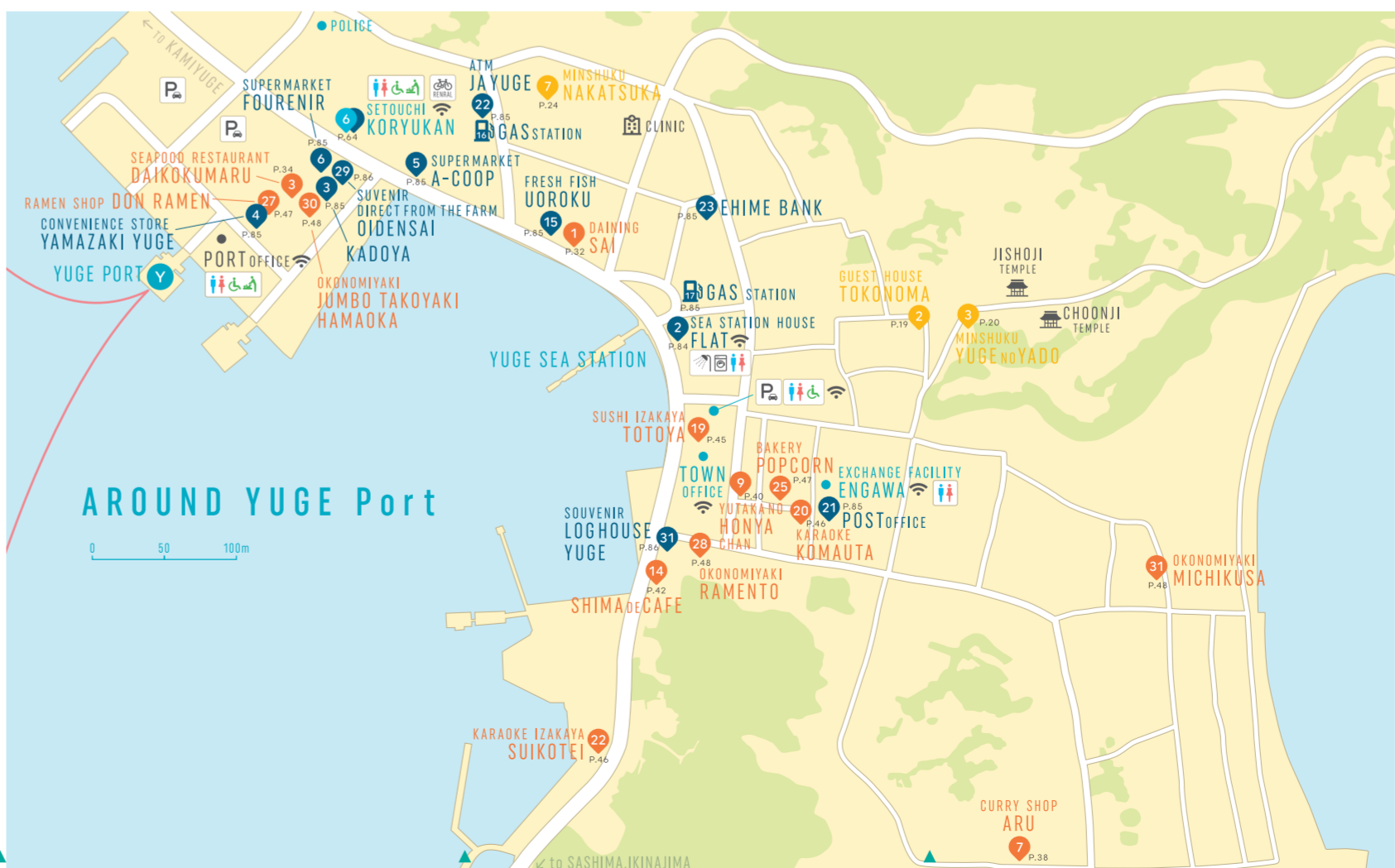
The Yumeshima Kaido road gracefully winds through the dreamy islands of Iwagi, Ikinajima, Sashima, and Yuge, connected by three stunning suspension bridges. This unique island-hopping route offers a distinctive contrast to the well-travelled Shimanami Kaido cycling path. As you explore these charming islands, you'll witness authentic island life unfolding before your eyes. Exchange warm greetings with friendly islanders during leisurely strolls through an unspoiled journey, free of traffic lights or tunnels. It's the perfect route for beginners and families, offering an authentic Kamijima experience amidst gentle breezes and breathtaking sea vistas. Plus, you'll find convenient facilities and inviting cafes along the way, ensuring that all travelers can comfortably uncover the route's genuine charm and captivating adventure.



RENTAL CYCLE TERMINAL

We offer a lineup of rental bicycles available at 4 terminals around kamijima island. (Guidebook P.83)

- 1 IKINA TATEISHI PORT OFFICE**
★ Next to Tateishi Port
☎ 0897-76-2224
🕒 8:30-17:15 7days a week
- 6 YUGE SETOUCHI KORYUKAN**
★ 2min from Yuge Port
☎ 0897-72-9277
🕒 8:30-17:15 SAT, SUN, HOL -16:45
🌞 New Year Holiday
- 12 IWAGI PORT OFFICE**
★ Next to Iwagi Port
☎ 0897-75-3277
🕒 8:30-17:15 SAT, SUN, HOL -16:45
🌞 New Year Holiday
- 13 UOSHIMA TOURIST CENTER**
★ Next to Uoshima Port
☎ 0897-78-0020
🕒 8:30-17:15 🌞 New Year Holiday



- 1 SHIOMI HOUSE P.16 @Sashima
- 2 TOKONOMA P.19 @Yugejima
- 3 MINSHKU YUGE no YADO P.20 @Yugejima
- 4 MICHISHIO P.23 @Yugejima
- 5 MINSHKU NAKATSUKA P.24 @Yugejima
- 6 TAKEGAWA P.24 @Yugejima
- 7 RYOKAN KAMEI RYOKAN P.25 @Yugejima
- 8 PUBLIC INN UOSHIMA TOURIST CENTER P.26,83 @Sashima
- 9 GUEST HOUSE SUKOMARI-M P.28 @Ikinajima
- 10 MINSHKU NATAORE no KI P.26 @Takaikamishima
- 11 IZAKAYA SAI P.32 @Yugejima
- 12 TAKEOUT & CAFE TAIYA P.34 @Yugejima
- 13 SEAFOOD RESTAURANT DAIKOKUMARU P.34 @Yugejima
- 14 BOOK CAFE OKAPPA P.36 @Sashima
- 15 BAKERY CAFE KITCHEN 313 KAMIYUGE P.36 @Yugejima
- 16 CAFE vida con miel P.37 @Yugejima
- 17 CURRY SHOP ARU P.38 @Yugejima
- 18 PIZZERIA IPPUKU P.39 @Yugejima
- 19 BOOK & TEA SHOP YUTAKA no HONYA P.40 @Yugejima
- 20 COFFEE SHOP YUMESHIMA COFFEE P.40 @Ikinajima
- 21 LEMONADE STAND WARASHIBE IWAGIJIMA BASE P.41 @Iwagijima
- 22 SWEETS SHOP OYATSU TIME P.41 @Yugejima
- 23 HOUSEHOLD GOODS, CAFE COTOLIER SHOTEN P.41 @Yugejima
- 24 CAFE RESTAURANT SHIMA de CAFE P.42 @Yugejima
- 25 IZAKAYA MISTY KAMEI P.43 @Iwagijima
- 26 CAFE RESTAURANT LEMON HEART P.43,83 @Yugejima
- 27 FARMER'S RESTAURANT DEBESO OBACHAN P.44,76 @Iwagijima
- 28 CAFE NOUSON 808 P.44 @Yugejima
- 29 SUSHI IZAKAYA TOTOYA P.45 @Yugejima
- 30 KARAOKE KOMAUTA P.46 @Yugejima
- 31 IZAKAYA OKAERINASAI P.46 @Ikinajima
- 32 KARAOKE IZAKAYA SUIKOTEI P.46 @Yugejima
- 33 YAKINIKU DONGURI P.46 @Yugejima
- 34 BARBQ, CATERING MIYUKI P.47 @Ikinajima
- 35 BAKERY POPCORN no IE P.47 @Yugejima
- 36 DELI NAKAURA P.47 @Ikinajima
- 37 RAMEN SHOP DON RAMEN P.47 @Yugejima
- 38 OKONOMIYAKI RAMENTO P.48 @Yugejima
- 39 OKONOMIYAKI NISHINO P.48 @Yugejima
- 40 OKONOMIYAKI JUMBO TAKOYAKI HAMAOKA P.48 @Yugejima
- 41 OKONOMIYAKI MICHIKUSA P.48 @Yugejima
- 42 CAMPING, SEA WALL ART SOUND HAKANDA P.56 @Sashima
- 43 SUP AND ISLAND COORDINATOR BELIEVER P.56 @Sashima
- 44 FACILITY, LIBRARY SETOUCHI KORYUKAN P.63 @Yugejima
- 45 TOWN GUIDE KAMIJIMA TOURS P.65 @Yugejima
- 46 Sports & Recreation facilities IKINA SPORTS & RECREATION PARK P.69 @Ikinajima
- 47 SEAWATER BATHING FACILITIES SHIONOYU P.69 @Yugejima
- 48 MANGA ART MANGA MURAL ART P.70 @Takaikamishima
- 49 SEA WALL ART A HEAVENLY FLOWER P.71 @Yugejima
- 50 SUTRA COPYING GANJYOJI-TEMPLE P.73 @Yugejima
- 51 Ancient Algae Salt Making YUGE no SHO P.73 @Yugejima
- 52 Fresh Strawberry Picking BLUE LEMON FARM P.76 @Iwagijima
- 53 SMOKE COOKING SMOKE WORKSHOP P.78 @Yugejima
- 54 POTTERY EXPERIENCE DODO P.79 @Yugejima
- 55 TOYOSHIMA INFORMATION CENTER SEASTATION "FLAT" P.84 @Yugejima
- 56 SOUVENIRS KADOYA P.85 @Yugejima
- 57 CONVENIENCE STORE YAMAZAKI YUGE P.85 @Yugejima
- 58 CONVENIENCE STORE POPLAR P.85 @Ikinajima
- 59 CONVENIENCE STORE Y SHOP MURAKAMI P.85 @Ikinajima
- 60 GROCERY STORE UOSHIMA SHOTEN P.85 @Uoshima
- 61 FRESH FISH SHOP UOROKU P.85 @Yugejima
- 62 DIRECT FROM THE FARM OIDENSAI P.86 @Yugejima
- 63 SOUVENIRS LOGHOUSE YUGE P.86 @Yugejima



Usage Guide

Yumeshima Kaido tour route 50.8km
Mt. Sekizen Hill Climb route 4.8km
U-turn BlueLine round trip route 7.5km

- DISTANCE TABLE
- PARKING LOT
- TOILET
- MULTIPURPOSE TOILET
- Wi-Fi FREE SPOT
- BICYCLE RENTAL
- CYCLE OASIS
- COIN LAUNDRY
- COIN SHOWER
- INN, GUEST HOUSE
- RESTAURANT, TAKE-OUT FOOD
- ACTIVITY SPOT
- INFORMATION
- P.O.O KAMIJIMA GUIDEBOOK PAGE NUMBER

